

NKC
NORTH KENT
COLLEGE

2025/26

COURSE **GUIDE**

For School Leavers

Dartford | Gravesend | Tonbridge

16+



Ofsted

**Good
Provider**

CONTENTS





**APPLY
NOW**

COURSES

Business & Finance	27	Hospitality & Events	57
Computing & Gaming	29	Legal Administration	59
Construction & Engineering	31	Public Services	61
Creative Industries	37	Sports	63
Early Years	47	Travel & Tourism	65
Hair & Beauty	49	Access to Higher Education	67
Health & Social Care	53	Hadlow College Courses Land-based	69
Hospitality & Catering	55		

EVERYTHING ELSE YOU NEED TO KNOW

Welcome	3	Options after your GCSEs	19
Open Events and Campus Tours	4	Work Placements	21
Where are we?	5	Apprenticeships	23
Reasons to be part of NKC	7	How to Apply	73
Students' Union & Learner Voice	9	Alumni Success	75
Qualifications Explained	11	Student Welfare	79
Entry Requirements	13	Student Financial Support	80
What Courses Where	15	Timeline	81



WELCOME

A Welcome from the Chief Executive and Executive Principal

I am delighted to introduce the 2025/26 School Leavers' Guide. Choosing which college or school to attend is one of the most exciting and important decisions you will make. The course you choose now will help shape your future career and we are committed to helping you make the right choice.

Our North Kent College (NKC) family consists of four unique campuses, Dartford, Gravesend, Tonbridge and Hadlow (our rural and land-based college). All of our campuses serve their local communities and each individual campus has its own unique identity but together we offer a broad range of programmes, enrichment and progression opportunities.

We are committed to providing our students with the best learning experience possible and welcome all students, whether joining us from school or college or returning from a break in their studies.

Our work with employers and the local community leads to many wide ranging and diverse progression opportunities and you will find within this guide several testimonies from current and past students where you will see their journeys and chosen career paths.

Take your time to explore this guide and you can find even more details on our website. Make sure to visit our year-round open events or simply give us a call or drop us a message on our social media channels. Don't just take our word for it though make sure to watch the student testimonials and video interviews to find out why students have made us their number one choice.

David Gleed
Chief Executive and Executive Principal

Open Events and Campus Tours

Our Open Events are held at various times across the year and take the form of online or on-site events.

We've 100s of courses on offer and we want you to explore our facilities whilst having the opportunity to speak to tutors and current and past students. You can also apply for a September 2025 start at our events.

Make sure you keep an eye on our website for full details and to pre-register!

www.northkent.ac.uk/events

2024

Dartford Campus

Tuesday 15th October: 3:30pm–7:30pm

Gravesend Campus

Thursday 17th October: 3:30pm–7:30pm

Tonbridge Campus

Tuesday 5th November: 3:30pm–7:30pm

Hadlow College Open Morning

Saturday 9th November: 10:00am–1:00pm

Book your place



WHERE ARE WE?

1 Dartford Campus

Oakfield Lane,
Dartford,
Kent, DA1 2JT

2 Gravesend Campus

Lower Higham
Road, Gravesend,
Kent, DA12 2JJ

3 Tonbridge Campus

Brook Street,
Tonbridge,
Kent, TN9 2PW

4 Hadlow Campus

Tonbridge Road,
Hadlow,
Kent, TN11 0AL



Getting to College

<https://www.northkent.ac.uk/about-us/getting-to-college>





REASONS TO BE PART OF NKC



Motivated & Supported Students

Our students are highly motivated to succeed and this is encouraged by the high expectations of our tutors. Keeping the curriculum active and varied enables students to experience a broad range of learning activities so you progress well. Our Ofsted results reinforce the idea that our students do make better than expected progress and this is down to their motivation to succeed, coupled with supportive teaching and a mature learning environment.



‘Good’ rating from Ofsted 2024

We are delighted our recent Ofsted grading which saw the college rated ‘Good’ overall, and with an assessment of ‘Outstanding’ in Behaviours and Attitudes.

We are pleased to maintain our overall ‘Good’ rating, but we are incredibly proud of our ‘Outstanding’ assessment in the Behaviours and Attitudes category. This category assesses how our leaders and staff create a safe and calm learning environment across the College and how this will impact students’ behaviour and attitude.

Professional Work Placements

Our tutors work successfully to ensure that you develop your skills in realistic work situations, making use of high-quality facilities and resources, enabling students to learn to work to industry standards. These facilities include our commercial areas where students work in real environments, including our salons, restaurants, Miskin Theatre and Miskin Spa.

Equivalent of A Levels

All of our Level 3 courses are the equivalent of A Levels and give you the UCAS points to apply to university.

Progression Routes

We actively promote progression from our Further Education (FE) programmes onto university programmes which raises aspirations. We continuously educate and empower our students to consider Higher Education (HE) as a valuable progression route into their desired career.

Great Training

Tutors use the College’s realistic working environments to develop students’ practical skills, such as the hair and beauty salons, motor vehicle workshops and training kitchens.

Excellent Atmosphere

We have an inclusive culture and atmosphere; the College is welcoming and students enjoy their studies and have mutual respect for one another, with a clear understanding of their responsibilities.

Employer Partnerships

We are dedicated to creating powerful partnerships with commercial organisations both locally and nationally. We work with businesses of all sizes, from organising work-based projects for individuals, to corporate training programmes and everything in between. Our links with employers ensures our students obtain the highest level of opportunity to develop their skills on industry placements and internships (where applicable).

STUDENTS' UNION & LEARNER VOICE





Students' Union

The Students' Union (SU) is run by students and promotes the interests of the student community.

Every student becomes part of the Union from the day they join us to the day they leave us – but it's up to you as to how involved you want to be from being part of the Executive Committee, to being a Class Representative. You could even become a Student Governor or SU President.



Learner Voice

It is important to us at NKC that all students are given the opportunity to have their voices heard.

The Learner Council is a democratic system based on government principles as identified in Fundamental British Values. Learner Voice provides learners with the platform to share persuasive arguments to improve elements of learner experiences.

Class representatives will have the opportunity to develop integrated employability skills, election and voting processes.



QUALIFICATIONS EXPLAINED

Entry Level Certificates

These qualifications are available to those who may not have the GCSE grades to go straight on to a Level 1 mainstream course, acting as a step-up qualification.

UAL, NCFE & BTEC Diplomas

These are one or two year full-time courses specialising in a specific vocational area at Levels 1 to 4. They are made to accommodate the needs of employers and allow for progression to university, providing practical real-life learning with a key theoretical background. BTECs and NCFEs Level 3 can be taken instead of A Levels as a route to university.

**APPLY
NOW**

VRQ (Vocationally Recognised Qualifications)

These courses, much like BTECs, specialise in specific vocational areas from Level 1 to 3. They aim to prepare you for the world of work focusing on a practical hands-on approach to learning, with theory to support this. These qualifications aim to help you find employment or progress within your career.

City and Guilds

These are job-based qualifications that are specifically designed to improve the work skills of employees and are suitable if the career you want requires a practical based training programme, or is ideal if you're already in a job and need to further your skills.

T Levels

T Levels are advanced Level 3 courses and equivalent to 3 A-levels. They offer longer periods of Industry Placement (usually up to 3 months). The course is a combination of in-class study and work placement.

Access to Higher Education

These courses are for people over the age of 19 who are interested in taking on an undergraduate degree programme, who do not already have the required qualifications.

Apprenticeships

With an Apprenticeship you will be employed with an organisation and will do your technical training at the College. This means you will get paid and achieve a qualification at the same time. An Apprenticeship can take between one and four years to complete and covers over 1500 job roles in a wide range of industries.

Foundation Degrees and HNC/Ds

Foundation Degrees and Higher National Certificates and Diplomas are undergraduate qualifications that are equivalent to years 1 and 2 of a university Bachelor's Degree. These programmes offer a more vocational element to university degrees, often with links to the industry itself.

Professional Qualifications

These provide practical and work-related skills and the opportunity to gain nationally recognised qualifications, including AAT (Association of Accounting Technicians) and CACHE (Council for Awards in Care, Health and Education).

GCSE English & maths

It is a Government requirement that all 16-18 year old students who have not yet passed GCSE English and maths with at least Grade 4 or C, to continue to study English and maths from the age of 16. Students who come to us with a Grade 3 or D at GCSE will receive support throughout the year to be able to re-take their GCSE in the Summer term. Students with a Grade 2 or E or below will be enrolled on Functional Skills programmes in English and maths which act as a stepping stone towards taking the GCSE in future years.

Work Placements

The industry placement scheme particularly, is designed to give students on Level 2 & 3 courses, approximately 50 days of relevant and substantive industry placements.



If you have not achieved a grade 9-4 or above in English or maths at GCSE level, you will work towards this at College.

ENTRY REQUIREMENTS & PROGRESSION ROUTES

LEVEL OF STUDY	EQUIVALENT TO	QUALIFICATION OFFER	
ENTRY LEVEL	2 GCSEs AT GRADE 2-1	Entry Level Courses	<div></div>
LEVEL 1	4 GCSEs at Grade 3-1 NVQ Level, BTEC Introductory Diploma	BTEC, Diplomas, NVQs	<div></div>
LEVEL 2	4 GCSEs at Grade 9-4 BTEC Diploma	UALs, BTEC, Diplomas, NVQs	<div></div>
LEVEL 3	A Levels, NVQ Level 3, Access	UALs, BTEC, Diplomas, NVQs	<div></div>
LEVEL 4	HNC, Foundation Degree, NVQ Level 4 or UAL Level 4	Foundation Degree, HNC, UALs	<div></div>
LEVEL 5	HND, Foundation Degree (Year 1), NVQ Level 5	Foundation Degree (Year 1), HND	<div></div>
LEVEL 6	Degree (Final Year)	Degree (Final Year)	<div></div>

Indicative entry requirements
– some programmes may have
higher entry criteria because of
industry standards.

**APPLY
NOW**

ENTRY REQUIREMENTS

PROGRESSION OPTIONS

• •	No GCSEs or formal qualifications required. Entry via interview.	LEVEL 1	
• •	You should have at least 2 GCSEs at grades 2-1	LEVEL 2	
• •	2 GCSEs at Grade 3 in core subjects. For specialist trades, you may need a Level 1 City and Guilds or NVQ	LEVEL 3	
• •	Usually 4 or 5 GCSEs at 9-4, BTEC First Diploma with Merit, NVQ Level 2, UAL or equivalent	LEVEL 4	
• •	You must be over 18 and have relevant Level 3 qualification	LEVEL 5	
• •	You must be over 18 and have relevant Level 3 or 4 qualification	LEVEL 6 DEGREE	
• •	This is a Degree Level qualification and you must have relevant Level 5 qualification	LEVEL 7 DEGREE	Equivalent to a Master's Degree



WHAT COURSES WHERE?

- 1** Level 1 **2** Level 2
3 Level 3 **4** Level 4
E3 Entry Level 3

- D** Dartford **T** Tonbridge
G Gravesend **H** Hadlow

Whilst every effort has been made to ensure that the information contained within this guide is accurate, North Kent College cannot be held responsible for omissions and errors. We reserve the right to introduce changes to the information at any given time. Information accurate at time of print.

Access to Higher Education

Access to Nursing & Healthcare **3** **D**

Business & Accounting

Business **2** **3** **D** **T**

T-Level Accounting **3** **D**

Computing & Gaming

Computing **2** **3** **4** **D**

Computing **1** **2** **3** **T**

Gaming **2** **3** **D**

Construction & Engineering

Multitrades **1** **G**

Brickwork **1** **2** **G**

Carpentry & Joinery **1** **2** **G** **H**

Painting & Decorating **1** **2** **G**

T Level – Technical qualification in Construction, Design, Surveying and Planning **3** **T**

Electrical Installation **1** **2** **G** **T**

General Engineering **1** **2** **G**

HNC Engineering **4** **G**

T Level Technical Qualification in Design and Development for Engineering and Manufacturing **3** **G**

Introduction to Motor Vehicle Industry & Vehicle Technology **E3** **G** **H**

Automotive Maintenance **1** **G** **H**

Vehicle Maintenance & Repair **2** **3** **G** **H**

Motor Cycle Maintenance and Repair **2** **3** **H**

Motor Sport **2** **3** **H**

Plumbing **1** **2** **G** **T**

Refrigeration & Air-Conditioning **1** **2** **G**



Creative Industries

3D Animation & VR	3	D
2D Animation & Concept Art	3	D
Animation & VFX	4	D
Acting	2 3	D T
Acting	3 4	D
Architecture	3 4	D
Art	1 2 3 4	D T
Content Creation	3	D
Creative Design	2	D
Creative Media	3	T
Dance	2 3 4	D
Digital Journalism	3	D
Graphic Design & Illustration	3 4	D T
Fashion	2 3	D T
Media	2	D T
Media Production	4	D
Musical Theatre	2 3 4	D
Music Performance	2 3	D T
Music Performance	4	D
Music Technology	2 3	D
Photography	2 3	D T
Photography	4	D
Technical Theatre	2 3 4	D
TV & Film	3	D

**APPLY
NOW**

WHAT COURSES WHERE?

1 Level 1 2 Level 2
3 Level 3 4 Level 4

D Dartford T Tonbridge
G Gravesend H Hadlow

Whilst every effort has been made to ensure that the information contained within this guide is accurate, North Kent College cannot be held responsible for omissions and errors. We reserve the right to introduce changes to the information at any given time. Information accurate at time of print.

Early Years & Healthcare

Early Years	2	D	T		
T-Level Education & Childcare	3	D	T		
Health & Social Care	1	2	3	D	T

Hair & Beauty

Beauty	1	2	3	D	T
Beauty Therapy (Advanced)				4	D
Hairdressing	1	2	3		D
Hairdressing		1	2		G
Hairdressing		2	3		T
Hair, Media & Theatrical Make Up		2	3		D

Hospitality & Catering

Catering Professional Chef	1	2	G	T
Catering Professional Food Service		2	G	

Hospitality & Events

Hospitality & Event Management	2	3	D
--------------------------------	---	---	---

Legal Administration

Legal Administration	2	D
----------------------	---	---

Public Services

Uniformed Services	1	2	3	D
Uniformed Services			3	T

Sport

Football Coaching	3	D	
Sports Coaching	2	D	T
Sports & Exercise Science	3	D	T
Sports Performance & Mentoring	3	D	
Sports Personal Training	3	D	

Travel & Tourism

Travel & Tourism	1	2	3	D	T
------------------	---	---	---	---	---



Can't decide?

Speak to one of our **careers advisers** if you wish to know more and we will be happy to advise about your options.

**APPLY
NOW**

OPTIONS

AFTER YOUR GCSES



**APPLY
NOW**

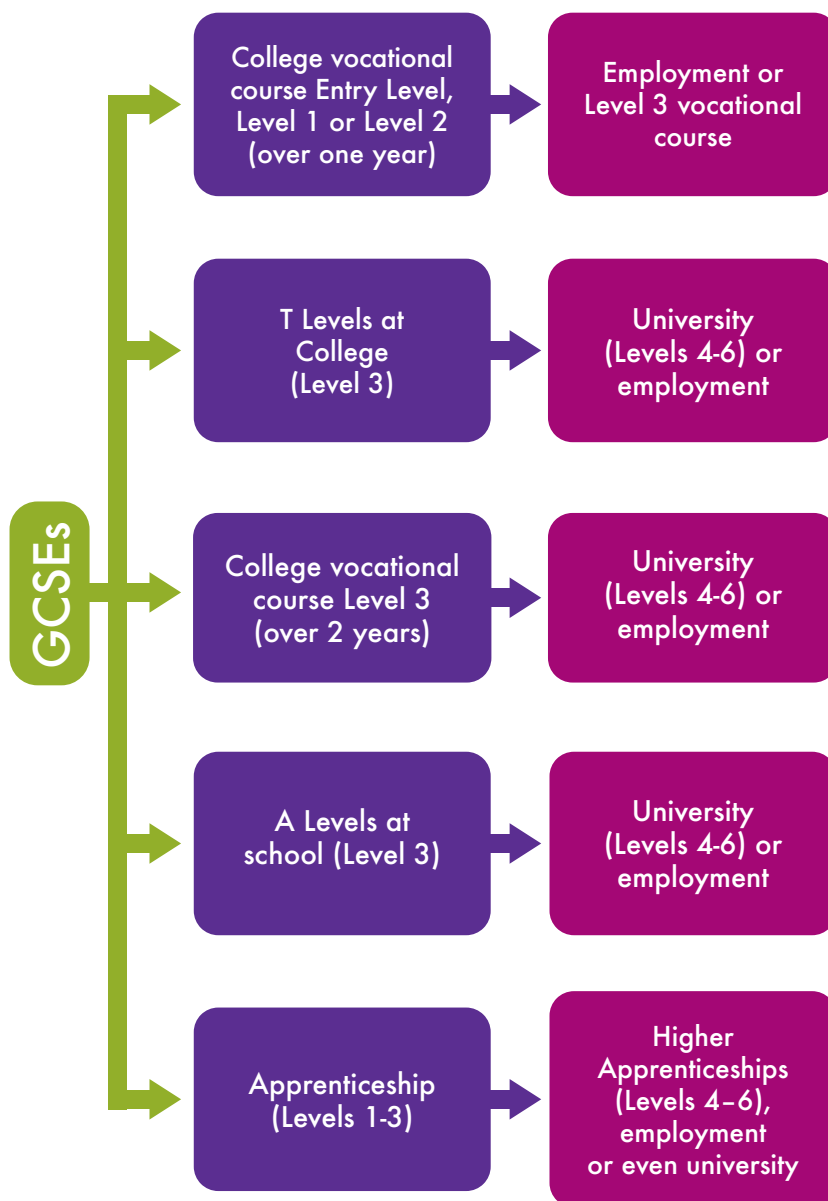
There are many options after your GCSEs, from vocational programmes, to A Levels, to Apprenticeships and they can all lead to your chosen career, but what are the best routes for you? Here's an idea of the paths you can take.

Levels of study

Depending on GCSE results (or predicted results), our tutors will recommend what level of study to apply for. This will be discussed at interview, but can be moved at enrolment after GCSE results.

As you can see, after GCSEs, students can start at Entry Level or Level 1 or 2 which are completed in 1 year and move to Level 3 which is equivalent of A Levels, or you can go straight into a two year Level 3 programme and move onto Level 4, university or into employment once completed.

For students wishing to go to university or study Higher Education programmes, a Level 3 Extended Diploma is required by universities in the subject (or closely related subject) to the one you wish to study. We have a number of courses that can lead to university.



WORK PLACEMENTS

Our vision is for our students to be the first choice for employers.

A work placement is one of the best ways for you to achieve this and be career-ready at the end of your course.

During your education programme at Level 2 or 3, you'll get the chance to work with some successful local SMEs, prestigious organisations in and around London or some innovative start-ups, all relevant to the qualification you're studying.

You'll be expected to complete a work placement of approximately 315 hours (45 days) over the year, either 1 or 2 days a week whilst you are not timetabled to be at College.

The placement forms an integral part of the education programme because they are with employers that are highly relevant to your studies and appropriate to your end qualification. They deliver real opportunities for you to apply what you are learning at College, into a work setting and some lead to permanent job or Apprenticeship offers at the end of the course.

You'll also receive careers advice, help with writing CVs and application forms and developing interview techniques. Our industry placement team will support you in the application process and guide you on the employability skills needed to succeed in the workplace.

**For more
information call
us now on:**

01322 629758
business@northkent.ac.uk



The Benefits of a Work Placement:

- 1 You will be working in the industry of your choice, giving you a better chance of employment after you graduate
- 2 You will be able to apply the learning from your classroom, into a real business environment
- 3 You will be working with and learning from employees within your chosen industry
- 4 You will be working for a company who may be looking to recruit in the future and who will remember you
- 5 You can find your own placement in a company you want to work for – this means you get to make a great first impression with a potential employer
- 6 Having a placement on your CV shows you are committed to the industry and willing to work hard – this puts you ahead of other applicants when it comes to applying for jobs
- 7 You can use your part-time job as a placement if it is in a relevant industry
- 8 An industry placement will enhance your UCAS application if you are progressing to University

By applying for a Level 2 or 3 course, you can participate in the industry placement scheme.

APPRENTICESHIPS AT NORTH KENT COLLEGE



Why not start to build your career with an Apprenticeship?

Did you know North Kent College is one of the country's leading Apprenticeship providers (Hadlow College is one of the country's Land-based Leading Colleges)

No matter what stage you are within your career, whether just starting out in the world of work or already an established member of staff, Apprenticeships can support you to develop your skills, knowledge and behaviours in your chosen profession via an Apprenticeship scheme, and is perfect solution to earn while you learn.

What is an Apprenticeship?

An Apprenticeship is a real job that gives you a learning platform to train and develop your skills, knowledge and behaviours in your chosen profession.

20% of your contracted working hours will be spent in training and development, either with us at college, or even in your workplace. The remainder of your time will be spent applying and developing your skills and knowledge deeper in your workplace.



Apprenticeship FAQs

Do Apprentices get paid?

As an Apprentice, you'll usually be employed to work a minimum of 30 hours per week and be paid a wage no less than the National Minimum Apprenticeship Rate – 6.40 per hour, for the time you are in work and in off-the-job training.

You can also undertake an Apprenticeship if you are a part time employee, in these circumstances we will review your part-time working hours and extend the duration of your Apprenticeship to ensure you receive the required level of training needed.

The amount you are paid is based on several factors including your previous experience and current skill set. Within some job roles your wage may increase as you progress and take on more responsibility. You will also receive the same benefits as any employee, including a holiday pay

Who can do an Apprenticeship?

Apprenticeships are open to anyone who is 16 years old and over, has a right to work in England and is not in full time education. There is no upper age limit and available to anyone whether starting out on their career or for those who have been working for some time.



Please check our website for the most-up-to-date Apprenticeship information as these are subject to change

We offer:

North Kent College

- Business Administrator (Legal/Finance Sector)
- Engineering Operative
- Hairdressing
- Maintenance and Operations Engineering Technician
- Maritime Mechanical and Electrical Mechanic
- Motor Vehicle Service & Maintenance Technician
- Seafarer (deck rating)
- Site Carpenter

Hadlow College Land-based

- Advanced Sports Turf Technician
- Architectural Joiner
- Crop Technician
- Golf Greenkeeper
- Golf Course Manager
- Horticulture or Landscape Construction Operative
- Horticulture or Landscape Supervisor
- Motor Vehicle Service & Maintenance Technician
- Site Carpenter
- Sports Turf Operative

Whilst every effort has been made to ensure that the information contained within this guide is accurate, North Kent College cannot be held responsible for omissions and errors. We reserve the right to introduce changes to the information at any given time. Information accurate at time of print.

Levels of Apprenticeships

Apprenticeships can now support your learning ambitions to the highest level however it is important to know that Apprenticeship levels are based on the job role and duties and responsibilities that sit within the Job Role. (even though you may have higher-level qualifications and or other subjects you could still undertake an Apprenticeship at a lower level.)

Apprenticeship Levels are set and equivalent to:

2	Level 2 (Intermediate): GCSEs	4	Level 4 (Higher): Foundation degree	6	Level 6 (Degree): bachelor's degree
3	Level 3 (Advanced): A-levels	5	Level 5 (Higher): foundation degree/first year of bachelor's degree	7	Level 7 (Degree): master's degree



What do I need to know about English and Maths?

English and maths are a fundamental part to successfully achieve your Apprenticeship, they are essential to support your longer-term career prospects and progression. As an apprentice you will be required to achieve a Maths and English qualification (if you don't already have one) as part of your Apprenticeship. Each Apprenticeship programme we offer has specific Levels of Maths and English that are required on entry to starting your Apprenticeship.

What is the End Point Assessment?

Once your Apprenticeship's practical training period is completed, you will be entered through the Apprenticeship Gateway. Once you have been

accepted and approved through the Gateway, The End Point Assessment Organisation (EPAO) will appoint an independent assessor, who will undertake a series of competency tests on you, this could include, an exam, a practical observation of skills learnt, professional discussion, Review of your portfolio of evidence and or project

The End Point Assessment is your opportunity to demonstrate that you are genuinely competent in your occupation by allowing you to showcase what you have learnt throughout your Apprenticeship. Each Apprenticeship programme has a slightly different assessment approach however what they all have in common is that they'll assess the knowledge, skills and behaviours you have developed during your Apprenticeship.

To find out more or to see which Apprenticeships are available visit:

[www.gov.uk/apply-Apprenticeship](https://www.gov.uk/apply-apprenticeship)

or visit our Apprenticeship vacancy page at:

www.northkent.ac.uk/Apprenticeships





Progression and your next steps

Higher Education

Here at North Kent College, we pride ourselves on ensuring our students progress. We offer several Higher Education Programmes, so you can continue your studies with us at Degree level.

Tuition Fees

We can offer you the same standard of education as a university at a fraction of the cost! Our undergraduate tuition fees vary depending on your course, you can find the most up-to-date fees on our website.

Study Locally

Studying with us locally means that you will save money by not moving away to university. You can live at home and in many cases you can also work.

Supportive Environment

We're smaller than universities, which means greater support is available.

Mature Students

Having the required entry grades is beneficial, especially for those who have just finished college or sixth-form. However, your application is encouraged if you are a mature student (aged 21 and over), without the required entry grades, but with relevant industry experience.

Whilst every effort has been made to ensure that the information contained within this guide is accurate, North Kent College cannot be held responsible for omissions and errors. We reserve the right to introduce changes to the information at any given time. Information accurate at time of print.

BUSINESS & ACCOUNTING



**The
Corporate
Hub**
at North Kent College

The Corporate Hub

The Corporate Hub encompasses our Business, Finance and Legal Administration, allowing you to gain the skills that are desirable in the industry.

We have established links with many employers, both locally and in London, which helps our learners in gaining meaningful employment at the end of the programme(s). We have a reputation for producing learners of a high calibre.

COURSES

Business

2 3 D T

Accounting

3 D

2 Level 2 3 Level 3 D Dartford T Tonbridge



ENTRY REQUIREMENTS

For more information, please see page 13.



April 2024:

A Trip to San Francisco

A group of students, including those from Business and Accounting experienced a trip of a lifetime during a recent visit to San Francisco; taking in some of the USA's most iconic sights, including famous landmarks such as the Golden Gate Bridge, Alcatraz and Hollywood Boulevard.

The visit provided a great opportunity for the students to enhance their skills and find out the opportunities available around the globe, and it was extremely well appreciated by the students.



The trip was absolutely amazing. I have never experienced anything like it. Thank you for allowing me to experience this once in a lifetime opportunity.

Faye Murphy, Accounting



WHY US?

1

Industry expert tutors

You will be taught by staff who have gained their knowledge and experience first-hand from industry and academic backgrounds.

2

Industry-standard software

You will be working on industry-standard hardware and software, which allows you to learn using the latest equipment and technology.

3

Fantastic progression

We have a high level of achievement and progression into employment, higher education and have prominent recognition with employers.

COMPUTING & GAMING



**APPLY
NOW**

Our highly technical Computing & Games Development department benefits from industry-standard computing hardware and software, which allows you to learn using the latest equipment and technology.

COURSES

Computing

Computing

1 2 3 T

Computing

2 3 4 D

Gaming

Gaming

2 3 D

1 Level 1 2 Level 2 3 Level 3 4 Level 4

D Dartford T Tonbridge



ENTRY REQUIREMENTS

For more information, please see page 13.

WHY US?

1

Industry expert tutors

You will be taught by staff who have gained their knowledge and experience first-hand from industry and academic backgrounds.

2

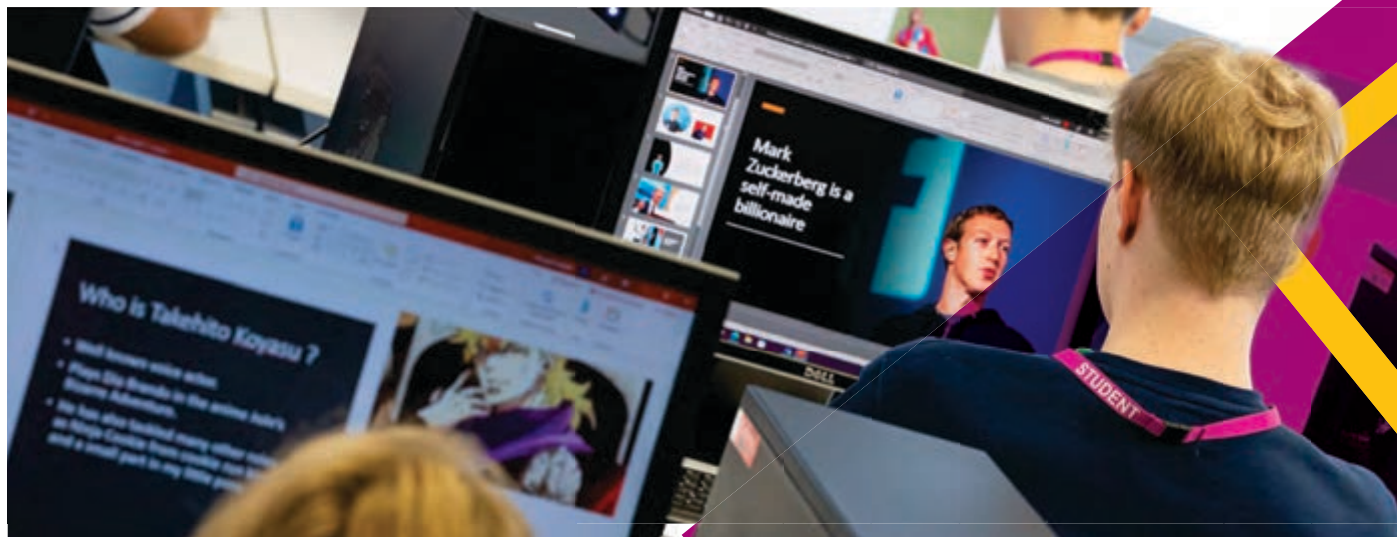
Industry-standard Software

You will be working on industry-standard hardware and software, which allows you to learn using the latest equipment and technology.

3

Fantastic progression

We have a high level of achievement and progression into employment, higher education and have prominent recognition with employers.



CONSTRUCTION & ENGINEERING



**APPLY
NOW**

To read more
about these
courses please
scan.



WHY US?

1 Excellent Workshops

Our Construction courses are delivered in excellent workshop environments, allowing you to experience your chosen trade

- Our workshops, laboratories and classrooms are designed to meet the highest industry standards.
- We have a fully functioning garage, diagnostic centre and workshops, which have all the latest equipment.

Our workshops, laboratories and classrooms are designed to meet the highest industry standards.

2 Business Links

We have developed strong business links with local employers, providing great benefits to our students. Due to our employer links, we have established a notable record for getting our students on to apprenticeships with reputable small businesses.

3 Industry Staff

Our staff are all from industry, highly qualified, and use their experience to give you the best support and start to your future.

4 Competitions

There are opportunities for you to compete against other students from this college and others, which can lead to you competing at other colleges locally, nationally and even internationally.



CONSTRUCTION & ENGINEERING

COURSES

**APPLY
NOW**

Construction Crafts

Multitrades	1	G		
Brickwork	1	2	G	
Carpentry & Joinery	1	2	G	H
Painting & Decorating	1	2	G	
T Level – Technical qualification in Construction, Design, Surveying and Planning	3	T		

Electrical Installation

Electrical Installation	1	2	G	T
-------------------------	---	---	---	---

Engineering

General Engineering	1	2	G
HNC Engineering	4		G
T Level Technical Qualification in Design and Development for Engineering and Manufacturing	3		G

Motor Vehicle

Introduction to Motor Vehicle Industry & Vehicle Technology	E3	G	H	
Automotive Maintenance	1	G	H	
Vehicle Maintenance & Repair	2	3	G	H
Motor Cycle Maintenance and Repair	2	3	H	
Motor Sport	2	3	H	

Plumbing & Heating

Plumbing	1	2	G	T
----------	---	---	---	---

Refrigeration & Air Conditioning

Refrigeration & Air-Conditioning	1	2	G
----------------------------------	---	---	---



Construction Craft apprenticeship courses available.
Please see page 23 for more information.

Level and Location

E3 Entry Level 3

1 Level 1

2 Level 2

3 Level 3

4 Level 4

G Gravesend

H Hadlow

T Tonbridge



ENTRY REQUIREMENTS

For more information, please see page 13.



Apprenticeships

We have a great record for getting our students onto apprenticeships with reputable companies.

To read more about the apprenticeships we offer, please visit

northkent.ac.uk/apprenticeships



FIND OUT MORE



**Electrical
Installation**



Engineering



**Motor
Vehicle**



Plumbing



**Refrigeration
& Air
Conditioning**



Construction





**APPLY
NOW**

“

What we are taught is really current and relevant. We have specific support for each element, so if you need help someone is there to advise and guide you.

Jake, Level 3 Electrical

”

“

This course enabled me to gain employment after the College arranged an interview for me!

Daniel Heard, Extended Diploma
Electrical and Electronic Engineering

”

CREATIVE INDUSTRIES



OUR COURSES

See pages 41-43

For all creative
courses please
scan here.



WHY US?

ual: awarding
body

1 **Difference between us and schools**

Studying a course in the creative industries at North Kent College, gives you an experience you are unlikely to find at any school or sixth form. You'll be working each day in state-of-the-art facilities and being taught by staff who have gained their knowledge from working in the industry. In fact our links with the industry helps many students gain meaningful employment, in the fields they are studying in, at the end of their courses.

2 **Links to Industry**

All courses are taught by a diverse range of experienced industry practitioners who have exciting and dynamic links to the creative industry.

3 **University**

You will be given the skills to develop an outstanding portfolio which supports the majority of our students in gaining entry to some of the best universities in the country including UAL, Goldsmiths and Brighton.



WHY US?

4 State of the art facilities

Our industry standard theatres and studios provide the perfect environment to train in your chosen specialism.

Specialist studios and workshops that have Apple Mac workstations, 3D printing and CAD/CAM facilities.

State-of-the-art equipment including the latest DSLR cameras, film cameras and lenses. Professional standard digital imaging and editing software, including Adobe Creative Suite, Photoshop, Bridge and Light-Room.

Graphics tablets, VR headsets and mobile devices for AR.

5 Collaboration

You will have the opportunity to work collaboratively with students from other creative courses, broadening your knowledge of the industry as a whole and enhancing your collaboration skills.



**APPLY
NOW**

MISKIN

Miskin Creative and Performance Studios

The new state-of-art studios at Dartford comprise of a two-storey building containing 2,836 sqm of educational floorspace, including a performance venue, dance studios, music technology spaces, digital design classrooms and workshops, and a new food court and social zone serving the whole College Campus.

Our team of professionals will offer you training which is unrivalled in the country.

You will be part of the Theatre Company and work on a diverse range of productions.

There are visits to theatres and film sets, plus collaboration with our beauty, hair, music and media departments.

Our actors get to showcase their work at a variety of theatres, festivals, competitions and professional screenings, including the British Film Institute.

Dancers are offered the opportunity to perform at nationally recognised dance exhibitions including 'Move It' and 'Can You Dance' as well as other local venues.



COURSES

NEW!

3D Animation & VR

3D Animation & VR
(UAL Extended Diploma in Creative Practice:
Art, Design and Communication)

3 D

2D Animation & Concept Art

2D Animation & Concept Art
(UAL Extended Diploma in Creative Practice:
Art, Design & Communication)

3 D

Animation & VFX (UAL Foundation Diploma in
Art and Design)

4 D

Acting

Acting (UAL Level 2 Diploma in Performing
& Production Arts)

2 D

Acting (UAL Level 2 Diploma in Performing
& Production Arts)

2 T

Acting (UAL Extended Diploma in
Performing & Production Arts)

3 D

Acting (UAL Extended Diploma in
Performing & Production Arts)

3 T

Screen Acting (UAL Extended Diploma in
Performing & Production Arts)

3 D

Acting for Stage & Screen (UAL
Professional Diploma in Performance)

4 D

LEVEL

1 Level 1

3 Level 3

2 Level 2

4 Level 4

LOCATION

D Dartford

T Tonbridge

Architecture, Interior & Product Design

Architecture, Interior & Product Design
(UAL Extended Diploma in Creative Practice:
Art, Design and Communication)

3 D

Architecture, Interior & Product Design
(UAL Foundation Diploma in Art & Design)

4 D

Art

Art & Design (UAL Diploma in Art, Design
& Media)

1 D T

Art (UAL Level 2 Diploma in Art & Design)

2 D T

Art (UAL Extended Diploma in Creative
Practice: Art, Design and Communication)

3 D T

Art (UAL Foundation Diploma in Art &
Design)

4 D T

**APPLY
NOW**



Creative Media

Media (UAL Level 2 Diploma in Art & Design)

2 D T

Content Creation
(UAL Extended Diploma in Creative Practice: Art, Design & Communication)

3 D

Creative Media (UAL Extended Diploma in Creative Practice: Art, Design & Communication)

3 T

Digital Journalism (UAL Extended Diploma in Creative Practice: Art, Design and Communication)

3 D

TV and Film (UAL Extended Diploma in Creative Practice: Art, Design and Communication)

3 D

Media Production
(UAL Foundation Diploma)

4 D

Dance & Musical Theatre

Dance (UAL Level 2 Diploma in Performing & Production Arts)

2 D

Dance (UAL Extended Diploma in Performing & Production Arts)

3 D

Musical Theatre (UAL Level 2 Diploma in Performing & Production Arts)

2 D

Musical Theatre (UAL Extended Diploma in Performing & Production Arts)

3 D

Dance & Musical Theatre (UAL Professional Diploma in Performance)

4 D

Graphic Design & Illustration

Creative Design
(UAL Level 2 Diploma in Art & Design)

2 D

Graphic Design & Illustration
(UAL Extended Diploma in Creative Practice: Art, Design and Communication)

3 D T

Graphic Design & Illustration
(Foundation Diploma in Art & Design)

4 D T



ENTRY REQUIREMENTS

For more information, please see page 13.

→ → → **MORE COURSES** → →

COURSES



ENTRY REQUIREMENTS

For more information, please see page 13.

Fashion

Fashion (UAL Diploma in Art & Design)

2 D T

Fashion (UAL Extended Diploma in Creative Practice: Art, Design and Communication)

3 D T

Music Performance / Technology

Music Miskin Voice (UAL Level 2 Diploma in Music Performance & Production)

2 D

Music Miskin Voice (UAL Extended Diploma in Music Performance & Production)

3 D

Music Performance (UAL Diploma in Music Performance & Production)

2 D T

Music Performance (UAL Extended Diploma in Music Performance & Production)

3 D T

Music Technology (UAL Diploma in Music Performance & Production)

2 D

Music Technology (UAL Extended Diploma in Music Performance & Production)

3 D

Music Performance/Production (UAL Professional Diploma in Performance)

4 D

Photography

Photography (UAL Diploma in Art & Design)

2 D T

Photography (UAL Extended Diploma in Creative Practice: Art, Design and Communication)

3 D T

Photography (UAL Foundation Diploma in Art and Design)

4 D

Technical Theatre

Technical Theatre (UAL Level 2 Diploma in Performing & Production Arts)

2 D

Technical Theatre (UAL Extended Diploma in Performing & Production Arts)

3 D

Technical Theatre (UAL Professional Diploma in Technical & Production Practice for the Creative Industries)

4 D

LEVEL

1 Level 1

3 Level 3

2 Level 2

4 Level 4

LOCATION

D Dartford

T Tonbridge



**APPLY
NOW**

From cutting edge Mac computer suites to high-tech music rehearsal studios, you will be using industry standard facilities of the very highest quality.

SUCCESS



Kirsty J Curtis, North Kent College, Miskin student from 2004-2008, played the role of 'Bianca' in Othello by William Shakespeare at the National Theatre directed by Clint Dyer.

Kirsty started her Miskin journey by training in Dance before moving to Acting and graduating in 2008, Kirsty says "I graduated The Miskin nearly 15 years ago and still to this day I am supported and loved by the family. Everyone keeps in contact. I have even been back a few times to direct and work at The Miskin. These guys taught me my craft and discipline and I am always forever grateful to them. "

After studying at Miskin Kirsty went on to study at Rose Bruford Drama School and left in 2012 as a Graduate with a BA (hons) Degree. Since her time at Rose Bruford, she has worked with various agents and agencies whilst building strong working relationships, She starred in a variety of TV Series and short films including Harlots, Call the Midwife, Homeless Ashes and played Bianca in Othello at the National Theatre from November 2022 till January 2023.

Othello, directed by Clint Dyer, is a new vision for one of Shakespeare's most enduring tragedies. 'Wed in secret, Desdemona and Othello crave a new life together, but as unseen forces conspire against them, they find their future is not theirs to decide'. Bianca is Cassio's jealous lover; her role is significant in the progress of Iago's scheme to make Othello believe that his wife Desdemona is cheating on him with Cassio.

“

I believe Miskin Theatre is the best place to learn and grow as a performer. There is no other place like it! You are taught your profession and your passion here and I would not have had it any other way. Miskin is your second home and a place of encouragement and real solid training.

”

FIND OUT MORE

Acting



Art



Creative Digital
Design



Creative
Media



Dance & Musical
Theatre



Fashion



Graphic Design
& Illustration



Music



Photography





EARLY YEARS



Forest School, originating in 1950s Scandinavia, embraces the open-air lifestyle of 'friluftsliv,' meaning free air life. It's an outdoor learning approach, immersing children in nature regardless of weather.

At North Kent College Early Years, Forest School sessions are integrated into all courses, led by our knowledgeable Forest School Leader.

COURSES

Early Years

2 D T

T-Level in Education & Childcare

3 D T

2 Level 2 3 Level 3 D Dartford T Tonbridge



ENTRY REQUIREMENTS

For more information, please see page 13.

Future Careers

Early Years Practitioner

Nanny

Play Therapist

Nurse

Special Educational Needs

Teacher

Student Progression

Higher Education Progression

University of Chichester, Bournemouth University, University of Sussex, Canterbury Christ Church University, University of Greenwich and The University of Manchester

Industry Progression

Dimples Day Nursery, Bright Beginnings Nurseries, Busy Bees Nurseries, Enchanted Wood Nurseries, Grace's Day Nursery and many more

WHY US?

1 Work experience

Our courses are based on practical learning gained through work placements that offer hands-on experience and real insight into how the early years sector works.

2 Industry expert tutors

You will be taught by staff who have gained their knowledge and experience first-hand from industry and academic backgrounds.

3 Industry visits

In addition to combining practical and theory lessons, our courses include the opportunity for industry visits and to meet guest speakers.



HAIR & BEAUTY



**BECOME
INDUSTRY
READY**



**Beauty &
Spa Therapy**



**Hairdressing
& Barbering**



**Make-up
Artistry**

WHY US?

1 Hands-on Experience

Develop your skills by gaining hands-on professional experience with real clients in our on-site commercial salons, spa & make-up studio.

2 Experienced industry staff

Our tutors are highly qualified across beauty and hair, with a wealth of industry knowledge and experience, including salon & spa ownership and bespoke training.

**PROUD TO BE
THE ONLY
LEE STAFFORD
SALONS IN
KENT!**

3 Fantastic Facilities

North Kent College boats fantastic training facilities to include: sauna, steam rooms, vichy shower (water massage) system and industry standard salons.



**View courses
on page 52.**





OUR LEE STAFFORD ACADEMY SALONS BRING WORLD-CLASS HAIR EDUCATION TO KENT

Our Salons are the only Lee Stafford affiliated in Kent and South East London. The quality of education and the skills being delivered by our master trainers is exemplary.

You will receive training in up to 24 fundamental skills and techniques which you will learn to what Lee calls 'Michelin standard'.

“

"I'm very passionate about giving young professionals the best opportunity for a good education within hair dressing.

It's so important to be armed with the right tools and a wealth of knowledge when entering the world of hair dressing today. The college staff share my passion in delivering this ultimate training programme."

Lee Stafford

”

COURSES

Beauty & Spa Therapy

Beauty 1 2 3 D T

Beauty Therapy (Advanced) 4 D

Hair, Media & Theatrical Make-up

Beauty - Hair & Media Make-up 2 D

Beauty (Theatrical, Special Effects & Media Make-up Artistry) 3 D

Beauty - Hair & Media Make-Up 3 D

Hair & Beauty 1 T

Hairdressing

Hairdressing 1 2 3 D

Hairdressing 1 2 G

Hairdressing 2 3 T

 **A** Apprenticeships are available for this course. Please see page 30.

1 Level 1 2 Level 2 3 Level 3 4 Level 4
D Dartford G Gravesend T Tonbridge

 **ENTRY REQUIREMENTS**
For more information, please see page 13.

**CURIOUS
ABOUT OUR
ADVANCED
BEAUTY
PROGRAMMES?
ASK US!**



HEALTH & SOCIAL CARE



**Do you want to
work in the Health
and Social Care sector?**

The industry offers experiences
that give a great sense of
personal fulfilment, job
satisfaction and rewarding
careers.



COURSES

Health and Social Care

1 2 3 D T

1 Level 2

2 Level 2

3 Level 3

D Dartford

T Tonbridge



ENTRY REQUIREMENTS

For more information, please see page 13.

WHY US?

1 Industry expert tutors

You will be taught by staff who have gained their knowledge and experience first-hand from industry and academic backgrounds.

2 Work experience

Our courses are based on practical learning gained through work placements that offer hands-on experience and real insight into how the early years sector works.

3 High Level Tech Facilities

Gain access to advanced technology to support patients with conditions ranging from dementia to PTSD, enhancing your employability.

4 Workplace Ready Education

Ask us about our additional courses that will further support your employability. The Level 2 Award in Digital Skills in Emerging Technologies and IoT, and Level 3 Award in Using Technology in Health and Care Environments.

Student Progression

Higher Education Progression

University of Chichester, Bournemouth University, University of Sussex, Canterbury Christ Church University, University of Greenwich and The University of Manchester

Industry Progression

Dimples Day Nursery, Bright Beginnings Nurseries, Busy Bees Nurseries, Enchanted Wood Nurseries, Grace's Day Nursery and many more



HOSPITALITY & CATERING



Our modern professional catering facilities in Gravesend and Tonbridge include industry standard kitchens and service areas, two fully functioning restaurants, that are open to the public and highly equipped classrooms.

Professional industry placements are offered as part of your study programme and will enrich your knowledge of the industry and help you develop the skills required to work in the Hospitality and Catering industry.



COURSES

Catering - Professional Chef

1 G T

Catering - Professional Food Service

2 G

Catering - Advanced Professional Chef

2 G T

1 Level 1 2 Level 2 G Gravesend T Tonbridge



ENTRY REQUIREMENTS

For more information, please see page 13.

The Culinary Academy

The Culinary Academy comprises of our Hospitality Curriculum, The Gallery Restaurant and The View Restaurant. You'll be part of the hospitality industry from day one!



At the moment hospitality is one of the most sought after professions. Good hospitality is in huge demand.

Duncan Weetman, Head of Curriculum,
Hospitality and Catering



Pastry Chef of the Year Competition

Hospitality and Catering Student Competes In The Chefs' Forum Student Pastry Chef of the Year 2023

Recently, North Kent College student Abby Webster was invited to compete at The Chefs' Forum Student Pastry Chef of the Year 2023 competition to find the next best pastry chefs. The final took place at West London College and Abby was one of 12 students to make it to this stage.

Abby was tasked with designing a plated fine dining dessert for a tasted and visual assessment by their panel of expert judges

Abby did a fantastic job staying calm and producing a brilliant dessert that saw her place fourth in the country.



HOSPITALITY & EVENTS



Do you want to have an exciting career within the Events and Hospitality industry, and be part of one of the largest contributors to the UK economy?

This sector employs a vast array of opportunities as the sector continues to develop.

COURSES

Hospitality & Event Management

2 3 D

2 Level 2

3 Level 3

D Dartford



ENTRY REQUIREMENTS

For more information, please see page 13.

Future Careers

Business Development

Corporate Hospitality

Event Planner/Management

Event Coordinator

Food & Beverage Service

Front of House Operations

Hotel Management

Sales & Marketing

Work Experience

As part of the study programme the learners will be expected to undertake work experience within the Hospitality and Events Industry.

Industry placements are designed to give you the skills to start work at the end of your studies, progress into an Apprenticeship, or to add to your UCAS statement.

“

I would recommend studying at North Kent College because you will get the support needed to get you through your work when you're struggling, you will also meet great people and be given great opportunities such as work experience which the college will help you find.

I've secured myself a role as the Events Assistant within the Marketing department at North Kent College and Hadlow College following the completion of my course. My next steps are to get the experience within all different sectors of events and to build my knowledge and improve on the job.

Madeleine Groves, Level 3 Events and Hospitality
Progressed to Level 4 Travel Management

”



LEGAL & OFFICE SUPPORT



Interested in a career in Administration?

Organised but need help prioritising a busy workload? Confident in IT but want to learn advanced Microsoft Office skills? Good communicator but not sure how to be an effective team player?

Apply for our one-year Level 2 Administration for Legal & Professional Services course. We will equip you with the skills, knowledge, and behaviours needed to excel as an administrator in the legal and professional services industries. Upon completion, you can pursue a Level 3 Business Admin apprenticeship or full-time employment through our industry connections.

COURSE

Legal Administration

2 D

2 Level 2 D Dartford



ENTRY REQUIREMENTS

For more information, please see page 13.

Student Achievements

Jessie works at Linklaters LLP as a Personal Assistant.



“

My favourite part of the course was how much flexibility it offered, allowing me to use my free time to attend a work experience placement at another London law firm. There are countless opportunities to network and build connections with recruiters at top firms, such as work experience placements and presentation days, where employers would visit the college and educate us on what to expect when we joined professional firms ourselves.

For those looking into the Legal Administrative career path, my advice would be to utilise the support your tutors can provide you with. Their knowledge of the industry cannot be understated and I still use the tips and tricks from my time at college everyday!

”

WHY US?

1

Industry expert tutors

You will be taught by tutors who have gained their knowledge and experience first-hand from industry and professional backgrounds.

2

Work Experience

You will have the opportunity to apply for work experience placements through our connections with legal and professional services companies in London.

3

Strong links with employers

You will be able to gain meaningful apprenticeships and employment, through our strong links with employers.



PUBLIC SERVICES



“ It doesn’t just cover one job you want to do, it covers all the services.

Madison, Public Services Level 3

It offers a lot of exciting services; I joined college because I wanted to go straight into the fire services, and this is the quickest way for me to do that.

”

Jonathan, Public Services Level 3

COURSES

Entry to the Uniformed Services

1 2 3 D

Entry to the Uniformed Services

3 T

1 Level 1

2 Level 2

3 Level 3

D Dartford

T Tonbridge



ENTRY REQUIREMENTS

For more information, please see page 13.

APPLY
NOW

Future Careers

Air Force

British Army

Firefighter

HM Border Force

Royal Navy

Police Officer

Prison Officer

Higher Education

Would you like to study criminology, policing or criminal investigation at University?

You can make that choice once you achieve the Level 3 diplomas we offer here at college. The world is then your oyster!



SPORTS



Personal Training
& Sports Therapy



Sports Coaching
& Performance

Our Facilities

You will have access to state-of-the-art facilities at North Kent College's Dartford campus, delivered in our £22million Osterberg Sports Centre. Including a large multi-purpose sports hall, sports fields, a strength and conditioning room and fitness centre.

Our Sports Massage suite/clinic provides an excellent simulated work experience environment for all students involved in the Personal Training and Sports Science programmes.

COURSES

Sports Coaching & Performance

Sports Coaching

2 (D) (T)

Sports Performance & Mentoring

3 (D)

Football Coaching

3 (D)

Personal Training & Sports Therapy

Sport & Exercise Science

3 (D) (T)

Sport - Personal Training

3 (D)

2 Level 2 3 Level 3 (D) Dartford (T) Tonbridge



ENTRY REQUIREMENTS

For more information, please see page 13.



Football Academy

Do you have serious aspirations about playing football at the highest level whilst continuing your academic studies? Scan here for more information.



Future Careers

Gym Instructor

Sports Psychologist

Football Management

Sports Therapist

Personal Trainer

PE Teacher

Sports Nutritionist



I am really enjoying my course and looking forward to learning more at NKC. The College has lots to offer and the staff are always friendly.

My piece of advice would be 'If you have a dream don't give up on it'.

Max Wheeler, Sport Exercise & Fitness



TRAVEL & TOURISM



**APPLY
NOW**



Our Facilities

We offer a unique learning environment with extensive resources and the latest facilities to enhance your learning experience.

Our resources include a mock-up aeroplane for a real-life cabin crew learning experience.

COURSES

Travel & Tourism

1 2 3 D T

1 Level 2

2 Level 2

3 Level 3

D Dartford

T Tonbridge



ENTRY REQUIREMENTS

For more information, please see page 13.

Course Trips

We enhance your knowledge through local trips to diverse businesses, fostering understanding of this vibrant sector.

Additionally, we organise annual international trips to showcase global opportunities in events, travel, and business, offering insights that are distinct from those available within the UK.

Our comprehensive residential and day trip programme to long-haul, short-haul, and UK destinations provides a broad understanding of career opportunities, the industry, and the principles of responsible and sustainable tourism.

These experiences give you a well-rounded perspective on various aspects of the industry and prepare you for a successful career.



We have
amazing facilities,
including our
very own
mock cabin.

Future Careers

Cabin Crew

Ground Crew

Hotel Management

Resort Representative

Tour Guide

Travel Agent

ACCESS TO HIGHER EDUCATION



Access to Higher Education Diplomas are qualifications that will prepare you for entry into university, if you do not already have the traditional entry requirements.

Access courses are for anyone over the age of 19 who wants to gain a relevant Level 3 qualification to move on to an undergraduate programme at university or North Kent College.

COURSE

Access to Nursing
& Healthcare

Level **3**

Dartford

Our Access course has a high success rate of getting our students into university and ultimately into their dream job. It can be difficult coming back into education after some time away, but we understand this and are able to fully support you with this transition.

We will guide you through the course to develop your academic skills and knowledge as well as developing your research techniques and understanding of referencing systems. We will get you back into the mind-set for writing essays and thinking from an academic perspective, which you will need at university level.

“

The standard of teaching in my opinion is excellent, coupled with genuine support from all the tutors.

Absolutely I would recommend studying the access course, especially to anyone who is over 40 and thinks they may have left it too late. It's never too late.

Rowan Reid,
Access to Nursing and Healthcare Professionals

”

If you have never studied at Level 3 (A Levels) or above, and are aged 19-23 years, there are no tuition fees for these courses. If you're aged 19+ and have studied at Level 3, the Advanced Learner Loan can be applied for from Student Finance England.

Please note:

Once you complete your University course your Access loans are written off. However, you will need to go straight to University without gap years, for the loan to be written off.

Future careers

Nurse

Psychologist

Residential Care Worker

Social Worker

Midwife

Paramedic

Counsellor

Physiotherapist





HADLOW COURSES

Kent's Only
Rural and
Land-Based
College



WHY US?

Our main Campus is set in beautiful surroundings within a large managed estate including over 265 acres of prime arable land, woodland, commercial farms, established show gardens and horticultural glasshouses, lakes and other natural habitats.

Situated in the heart of the picturesque Kent countryside and yet within easy reach of central London and the coast, there really is no better place to study. Surrounded by farms and fields and on the edge of a pretty Kentish village, you won't find a more charming place to spend your time.

**Brand new sustainable
orchard and vineyard and
state-of-the-art glasshouses**

The farm has a working beef herd of around 50 head of cattle plus more than 600 sheep and arable land that is used for growing maize and wheat. We have over 60 horses in support of our Equine studies that also include sports therapy and rehabilitation.

Hadlow College has a proud heritage within the land-based sector. It is a special place with links to the local community and close ties with professionals in Agriculture and Horticulture.



For over 50 years we have been based at our current site, just outside of Tonbridge, Kent and our history can be traced back over 100 years. Former students have won major prizes in several prestigious national events and are a key part in the county's rural economy.

Here at Hadlow we teach transferable skills that lead to real world jobs and work closely with farmers and growers to make sure those skills remain relevant and up-to-date. We remain an integral part of the community and are aspirational on behalf of our students.

We offer a wide range of subjects including, Agriculture, Agricultural Engineering, Animal Management, Equestrian Studies, Horticulture, Floristry, Fisheries and Aquaculture. We also offer our NKC Hadlow courses in Motor Vehicle, Motorcycle and Motorsports and Carpentry and Joinery. We also offer 180 high standard units of student accommodation which brings the campus to life for Further and Higher education students.

An exciting new development is the creation of our new "robotic orchard and vineyard". Aimed at promoting sustainability, now a vital part of land-based industries, our cutting edge orchard has been planted with vines and stone fruits and will enable students to use and learn about automated spraying, robotic harvesting and the use of drones for mapping yield.

Take a look through the courses on offer and we recommend you consider attending one of the recruitment events across the year so you can see our facilities and speak to our tutors.

COURSES

Agriculture

1 2 3 (H)

Agricultural Engineering

3 (H)

Animal Management

1 2 3 (H)

Equestrian Studies

1 2 3 (H)

Fisheries Management

3 (H)

Floristry

2 (H)

Horticulture

1 2 3 (H)

NKC HADLOW COURSES

Construction

Carpentry & Joinery

1 2 (H)

Motor Vehicle

Introduction to Motor Vehicle Industry & Vehicle Technology

E3 (H)

Automotive Maintenance

1 (H)

Vehicle Maintenance & Repair

2 3 (H)

Motor Cycle Maintenance and Repair

2 3 (H)

Motor Sport

2 3 (H)



Agriculture



**Agricultural
Engineering**



**Animal
Management**



Construction



**Equine
Management**



**Fisheries
Management**



Floristry



Horticulture



**Motor
Vehicle**

**APPLY
NOW**



ENTRY REQUIREMENTS

For more information, please see page 13.

HOW TO APPLY

Scan to
apply using
our online
application
form





**APPLY
NOW**

Apply for a Course

Once you have decided on one or more courses that you're interested in, you can apply via our website, using our online application form.

Choosing the Right Course

If you're not sure what you want to study, you can browse our website, which has a comprehensive guide to the courses we offer. You can also book an appointment to see one of our careers advisers who are based at our Dartford, Gravesend and Tonbridge campuses.

When to Apply

Applications open early in October and we would advise you to apply as soon as possible as some course places are limited and we don't want you to miss out. Late applications will be considered, however spaces cannot be guaranteed.

What Happens Next?

Your application will be processed and we'll ask you to come in for an interview; this will be to make sure that you're applying for the right course. You may need to take an entry test, but don't worry it's only to determine what level you're at. You may need to bring examples of work, but you'll be told this prior to your interview. Once accepted, we'll send you a email to confirm your place.

Enrolment

You will be invited in to enrol at the end of August. You will be advised when to come in and what to bring with you. Once you've enrolled, you will officially be a student with us!

Applying for Higher Education

If you are applying for one of our undergraduate Higher Education programmes, you will need to apply via UCAS. Please see our website for more information.

ALUMNI SUCCESS



Cleo Collins

Studied Level 3 Motorsport & Vehicle Technology from 2020 to 2022 and it has already paid dividends, she now works for the Alpine F1 Team, and is the Number 1 Mechanic for the Race Support Team.

“

NKC offered a great course and it was within travelling distance from where I lived in North London.

The lecturers were all so passionate about their roles and had a great understanding of teaching and knowledge. I enjoyed the workshop days, we had the opportunity to learn amongst ourselves and team and help each other out with a wide variety of knowledge between us students.

I had a lot of practical experience prior to choosing to go for a motorsport course however, when looking at jobs in the career I wanted to do, I noticed a lot of employers wanted to see a motorsport qualification. It certainly helped me in my career to obtain the jobs I wanted.

”

Alfie Lewis

Studied Dance and Musical Theatre from 2021 to 2023. Just a year later he is working onboard a cruise ship travelling to some of the most exotic parts of the world!

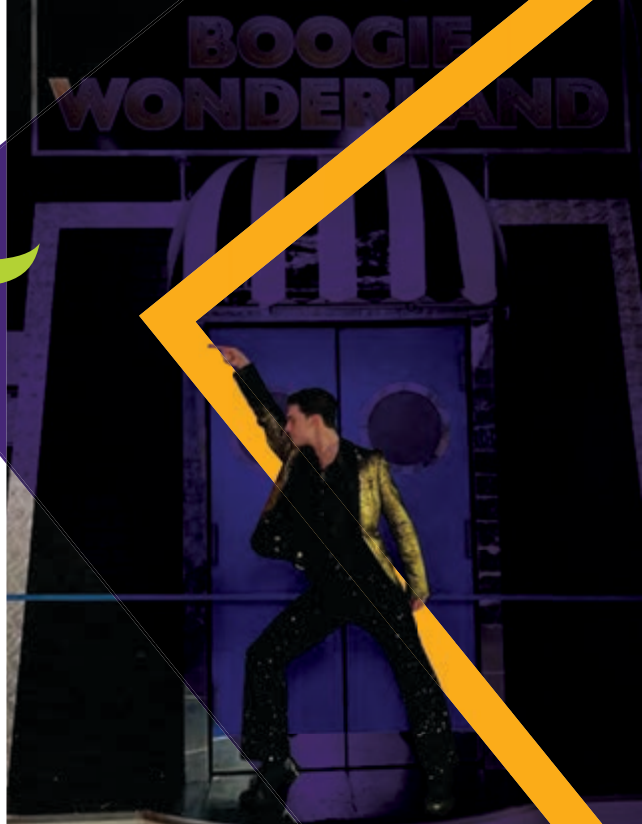
“

The three best things about studying at North Kent College was the support from staff, the motivation and drive received and a safe environment to express myself.

It's a great starting place for your career and both the education and staff are exceptional.

My college teachers enabled me to become to professional dancer I am today.

”



Jake Antoun

Studied Sports Coaching from 2022 to 2023, and now works at a golf academy with plans of becoming a full-time golf professional.

“

The teachers were laid back and passionate about the subjects. I enjoyed being surrounded by people of similar interests, and I liked the way I could schedule my practice around the timetable.

The college has definitely aided me to work better as I have a deeper understanding of how to adapt to different athletes.

”



Deimante Maciulyte

Studied Level 3 Beauty Therapy in 2015, she now has her own successful business Beauty by Daimond.

“

Being at North Kent College changed my career! As English is not my first language it was hard to start but they gave me the support and guidance to get me where I am today. I have been working in the beauty industry for 7 years and love it!

”

Louis Packham

Studied Level 4 Graphic Design & Illustration in 2020, he now works as a graphic designer at a design agency - We Manage Business.

“

The course has offered me a chance to really explore my style and deliver industry standard concepts. I have been able to progress through the years at NKC because there's always been help on standby when I needed it.

”



Sileena Farrell

Studied Level 3 Sport and Exercise Science from 2020 to 2022, and it has lead her on quite a path. She is currently in the USA on a Track and Field Scholarship.

“

The best three things about studying at NKC was the encouragement from the teachers, the variety of coursework for the course and the practical aspect of the course.

College has helped me pave the way to becoming a physiotherapist and has helped me to earn money while studying to gain my physiotherapist degree.

”



**Scan to read more
alumini success
stories on our
website!**



**APPLY
NOW**

STUDENT WELFARE

Careers Advice

Our qualified Careers Advisers are available all year-round to help students with impartial, confidential guidance and advice with career choices and planning Higher Education and job applications.

Counselling

College comes with more independence and therefore more responsibility and we know that sometimes life in general can be difficult. Our Counsellors run a confidential and non-judgemental service to help students when they need to talk, whether it's an emotional or personal difficulty. They help our students get through their courses to succeed.

Equal Opportunities

We're committed to the active pursuit of equal opportunities, which is based on the needs and rights of everyone in the College to be treated with respect and dignity. The College aims to ensure that no prospective or existing student, or member of staff receives less favourable treatment on any grounds, including; age, race, colour, nationality, ethnic origins, creed, disability, HIV status, sexual orientation, sex, marital or parental status, political belief or social or economic class. We continue to encourage the inclusion of students with learning difficulties and disabilities.

Disability

The College is committed to responding positively to the needs of all students so that they are able to access a broad offer of curriculum. Specialist staff are available to advise lecturers on appropriate support for individual students and groups.

Student Support

The transition from school to college is an important step and we have a variety of support in place to help young people make the most of their time at college.

Personal Tutors

Every student is allocated a personal tutor for their studies who can assist with academic study related questions, target setting to help ensure achievement and success and to support pastoral needs.

SEN Support

The Learning Support & Inclusion team provides support to students who have an EHCP (Education, Health & Care Plan). There may also be additional support for students with disabilities and for those students with specific learning difficulties, including dyslexia, if supporting evidence is provided.



If you would like further information or to talk to someone about Inclusion and Learning Support, please scan the QR to visit our website.



STUDENT FINANCIAL SUPPORT

Visit:
[www.gov.uk/
care-to-learn](http://www.gov.uk/care-to-learn)
for more
information

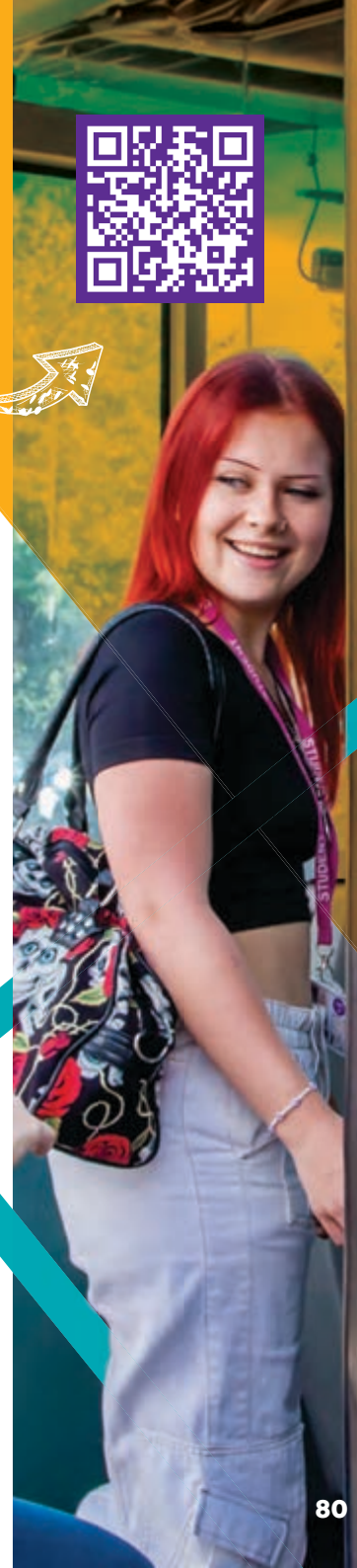


Money and finance doesn't have to be a worrying experience. We want your transition into college to be as smooth as possible. Therefore, we have plenty of information available to help you to understand what costs are involved and how you can find out if you are eligible for any financial support. Don't forget that there are no tuition fees for full-time Further Education courses if you're aged 16-18 years.

Students who are on a full-time course (funded either by the government or via a 19+ Advanced Learner Loan) may be entitled to financial assistance from the College's discretionary bursary which can help with course-related costs and travel to and from college. Bursaries are individually tailored depending on the course the student is studying, where they live and how they travel to college.

The bursary is only a contribution towards course-related costs and travel, so will not necessarily cover the full amount. These costs could include, but are not limited to the following:

- Course contribution/course materials fee applicable to your course
- Essential books, kit, uniform or equipment required for your course
- Free college meals - subject to meeting the criteria set by the Government
- Travel allowance (depending on where you live and the number of days you attend college). Please see website for further information.
- Childcare costs for one child only for students aged 20 or above. Students under the age of 20 should apply to the National Care to Learn Scheme for assistance with childcare



TIMELINE

September 2024

Start thinking about your options.

Grab a School Leavers' Guide and browse through our course offer – also online at www.northkent.ac.uk

October – November 2024

Time to visit and apply!

Visit our open events! Come and talk to tutors and students about life at NKC and your next steps after school.

Explore our campuses, take tours of our state-of-the-art facilities. You can apply on the day! Once you have applied you'll start to receive our VIP e-shots every month to keep you up-to-date with College life.

December 2024 – February 2025

Got any questions? Now is the time to talk and research.

Seen us at your school? Make sure you keep in contact. If you've already applied we'll be in touch with an interview date. Once you've interviewed we'll be in touch with an offer (* which ultimately depends on your GCSE results).

We also offer Campus Tours in these months so if you missed our Open Day you can book on these online.





February – March 2025

Visit us and apply!

Visit our open events! Another chance to come along to talk to us. View our state-of-the-art facilities, take campus tours and talk to tutors and students about life at NKC and your next steps after school. You can apply on the day! Once you've applied you'll start to receive our VIP e-shots every month to keep you up-to-date with College life.

March – April 2025

Revision Time.

Exams are approaching and it's revision time! Keep an eye on our website for all the top revision tips and tricks! All your hard work will pay off – so make sure to take time for yourself too during this busy period.



May – June 2025

Best of luck!

Good Luck in your exams! Wishing you the very best of luck with your upcoming exams. We're waiting to hear how you got on and will offer any support needed.

September 2025

Welcome to North Kent College!

Congratulations you are now a fully fledged NKC student! Its' official and your start date will be given to you at enrolment along with your ID badge. We look forward to welcoming you and the start of your next chapter here with us at NKC. Thanks for choosing us!

August 2025

It's results time! Enrolment – here you come.

Got your results – we hope you got just what you wanted. However, don't panic if you didn't or they weren't quite as expected.

We offer courses that start at entry level, so if you don't quite make the grades you expected, don't worry, there'll still be options for you. Or alternatively if you get better grades than expected we'll look at all the options for you.

July 2025

Summer Time – Go and enjoy yourself.

It's time to go and enjoy your Summer break! During the Summer, you will be receiving a letter inviting you to enrolment in August – exciting times ahead! Remember any questions we're still here to help over Summer. Just give us a call.



www.northkent.ac.uk

01322 629400



Dartford Campus
Oakfield Lane
Dartford, Kent DA1 2JT

Gravesend Campus
Lower Higham Road
Gravesend, Kent DA12 2JJ

Tonbridge Campus
Brook Street
Tonbridge, Kent TN9 2PW

Incorporating **Hadlow College**
Kent's only rural
and land-based College
Tonbridge Road, Tonbridge
Kent TN11 0AL